



SP3 RESOURCE GUIDE

USES

The DiamondGlow™ device is indicated for general dermabrasion of the skin and also delivers topical cosmetic serums onto the skin.

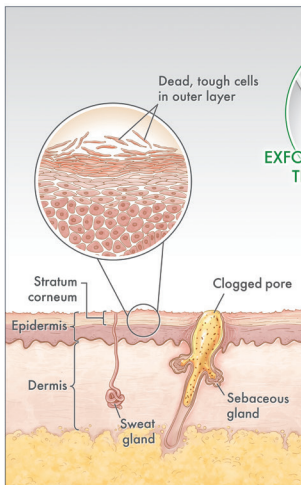
Please see page 30 for Important Safety Information and the Pro-Infusion Serums Disclaimer.

DIAMOND
GLOW™

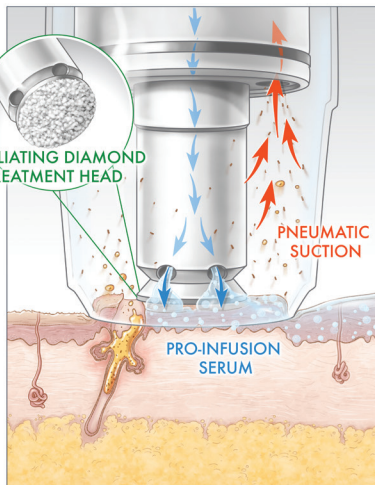
3X1™ TECHNOLOGY IN ONE, SIMPLE STEP



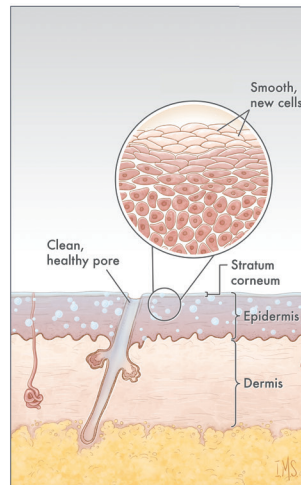
UNTREATED SKIN



DIAMONDGLOW™ 3X1™ TECHNOLOGY



TREATED SKIN



PLEXUS STANDARD

HANDPIECE AND DIAMOND TIPS



PLEXUS STANDARD HANDPIECE PARAMETERS



Skin Type	Diamond Treatment Tip Grit Size and Diameter	Neck Vacuum/ FLOW %	Face Vacuum/ FLOW %	Around the Eyes Vacuum/ FLOW %	Lips Vacuum/ FLOW %
Visible Redness	Very Fine (140 grit) 6 mm	2.5-3.0 50%-60%	2.5-3.0 50%-60%	Smooth Tip (00 grit) 2.5-3.0/75%-100%	Smooth Tip (00 grit) 3.5-4.5/75%-100%
Sensitive	Fine (120 grit) 6 mm	3.0-4.0 50%-60%	3.0-4.0 50%-60%	Smooth Tip (00 grit) 2.5-3.0/75%-100%	Smooth Tip (00 grit) 3.5-4.5/75%-100%
Normal	Medium-Fine (100 grit) 6 mm	3.0-4.0 50%-60%	4.0-5.0 50%-60%	Smooth Tip (00 grit) 2.5-3.0/75%-100%	Smooth Tip (00 grit) 3.5-4.5/75%-100%
Resilient	Medium (80 grit) 6 mm	3.0-4.0 50%-60%	4.0-5.0 50%-60%	Smooth Tip (00 grit) 2.5-3.0/75%-100%	Smooth Tip (00 grit) 3.5-4.5/75%-100%
Tough Skin	Medium-Coarse (60 grit) 6 mm	3.0-4.0 50%-60%	4.0-5.0 50%-60%	Smooth Tip (00 grit) 2.5-3.0/75%-100%	Smooth Tip (00 grit) 3.5-4.5/75%-100%

- Avoid treatment on eyelids
- Do not treat eye area or over lips when using Pore Clarifying Pro-Infusion Serum
- Always use smooth tip only for around the eyes and on the lips

PLEXUS PORE CLARIFYING

HANDPIECE AND DISPOSABLE BRUSH TIPS



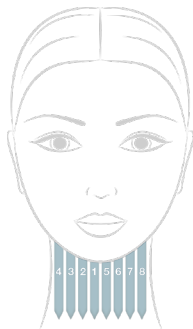
DIAMONDGLOW® FACE: ORDER OF TREATMENT



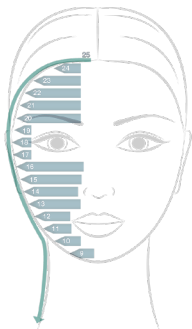
Neck, face, nose, around the eyes, lips (with 1 handpiece and 2 tips)

Total treatment time: 25 minutes with cleaning

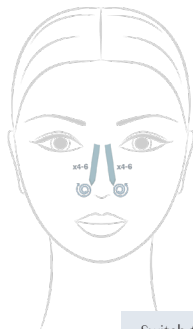
1 pass on neck



2 passes on face



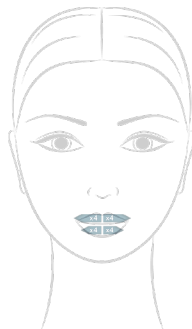
4-6 strokes on each side
of the nose



4-6 strokes
around the eyes



4-6 strokes on both the
upper and lower lips



Switch treatment tip

PLEXUS PORE CLARIFYING HANDPIECE PARAMETERS



BLEMISH TYPE	DISPOSABLE TREATMENT BRUSH TIP	NECK VACUUM/ FLOW %	FACE VACUUM/ FLOW %
Moderate (Some visible redness present)	Medium Brush Tip (Gray)	3.0-4.0 / 75%	4.0-4.5 / 75%
Severe (Visible redness prevalent)	Soft Brush Tip (White)	3.0-4.0 / 75%	4.0-4.5 / 75%

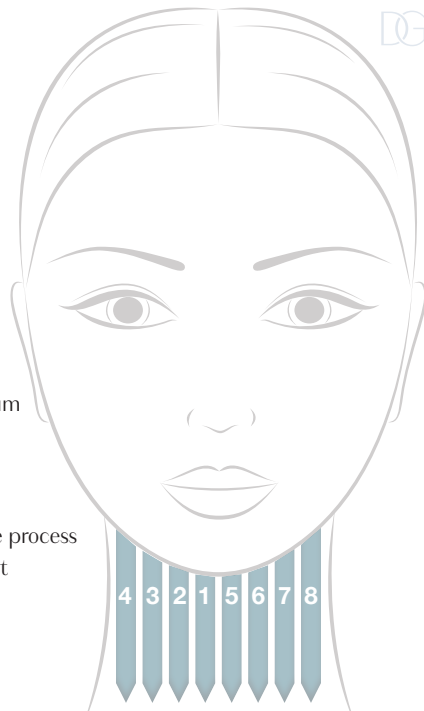
- Select appropriate level of abrasiveness depending on skin type and level of sensitivity.
The softer the bristles, the more depth will be reached and sweeping motion will be achieved
- Do not treat eye area or over the lips when using Pore Clarifying Pro-Infusion Serum

DIAMONDGLOW™ TREATMENT PROTOCOL

Neck

- Begin in the middle on the underside of the chin/jawline
- While holding the skin taut with your free hand, perform long, 4-second vertical strokes*
- Finish each stroke just above the collarbone
- After each stroke, gently tilt the handpiece upward against gravity and use your free hand to wipe away any residual serum
- The direction of strokes is medial to lateral
- The last stroke should be performed below the earlobe
- Once you have completed 1 side of the neck, repeat the same process on the other side of neck prior to beginning the face treatment

*Each new stroke should align directly next to the previous stroke.
Number of strokes will vary patient to patient.

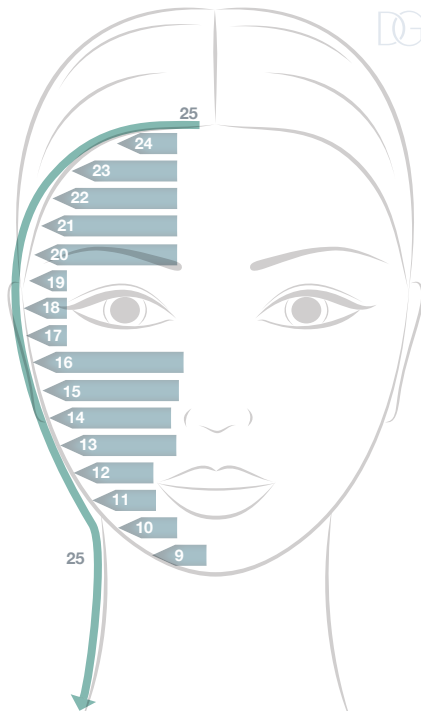


DIAMONDGLOW™ TREATMENT PROTOCOL

Right Side of Face

- Begin in the middle of the chin and work medial to lateral in direction
- While holding the skin taut with your free hand, perform long, 4-second horizontal strokes outward toward the hairline*
- Once you reach the hairline on the top of the forehead, perform the detoxifying pass (green)
 - The detox pass traces the hairline downward and wraps behind the ear; then gently down to the collarbone.
- Repeat on the opposite side of the face
- Second pass of the right side of the face is to be performed after completion of the left side of the face

*Each new stroke should align directly above the previous stroke. Number of strokes will vary patient to patient.

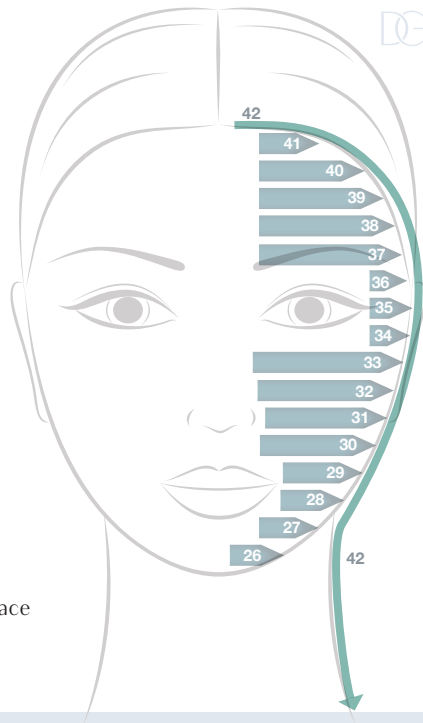


DIAMONDGLOW™ TREATMENT PROTOCOL

Left Side of Face

- Begin in the middle of the chin and work medial to lateral in direction until reaching the hairline on the top of the forehead
- While holding the skin taut with your free hand, perform long, 4-second horizontal strokes outward toward the hairline*
- Once you reach the hairline on the top of the forehead, perform the detoxifying pass (green)
 - The detox pass traces the hairline downward and wraps behind the ear; then gently down to the collarbone.
- Repeat on the opposite side of the face
- Second pass of the left side of the face is to be performed after completing the second pass of the right side of the face

*Each new stroke should align directly above the previous stroke.
Number of strokes will vary patient to patient.



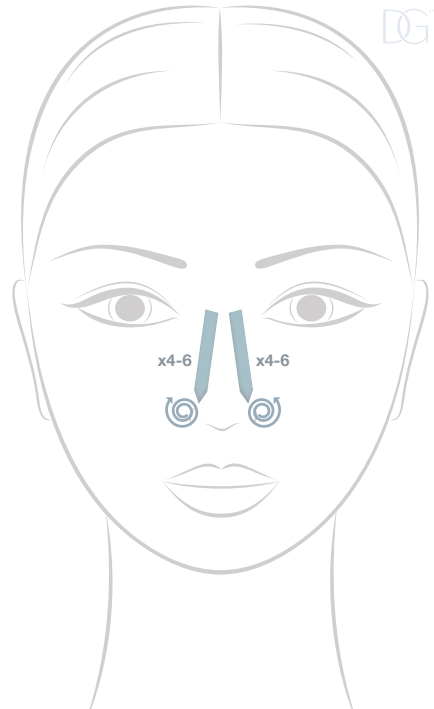
DIAMONDGLOW™ TREATMENT PROTOCOL

Nose

- Begin at top right side of the nose (not directly on bridge)
- Perform 4 to 6 short, slow 2-second downward strokes toward the nasolabial fold
 - For additional extractions, perform additional strokes
- Repeat on left side of the nose

FOR EXTRA EXTRACTIONS:

Hold down tip on the treatment area and perform an oscillating motion with the handpiece.



DIAMONDGLOW™ TREATMENT PROTOCOL

Around the Eyes

Do not treat eye area when using Pore Clarifying Pro-Infusion Serum

Only use smooth tip for this treatment area

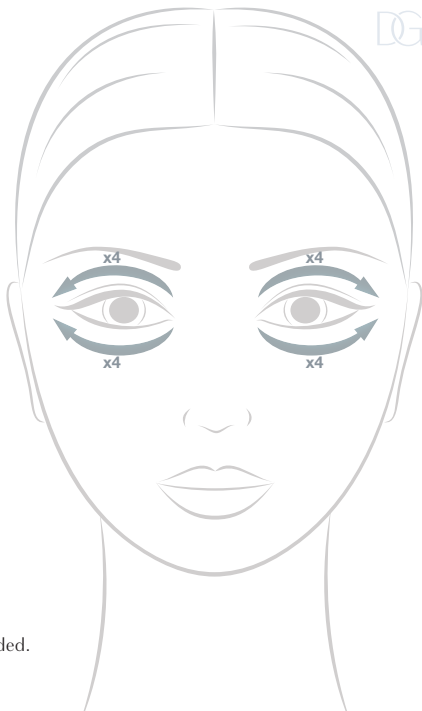
LOWER LID

- Begin strokes just below the medial canthus working lateral in an upside down rainbow shape*
- Perform up to 4 strokes on the lower lid prior to moving to the upper lid

UPPER LID

- Begin strokes above the medial canthus on the brow bone working lateral in rainbow shape
- Perform up to 4 strokes on the upper lid prior to moving to left side
- Repeat same motion on left upper and lower lid

*Additional crosshatching may be performed on/near crow's feet area, if needed.



DIAMONDGLOW™ TREATMENT PROTOCOL

Lips

Do not treat over the lips when using Pore Clarifying Pro-Infusion Serum

Only use smooth tip for this treatment area

LOWER LIP

- Begin strokes on right side of the mouth, starting from the middle of the lip outward
- Repeat motion on left side of lower lip
- Perform 4 to 6 short, 2-second lateral strokes on both sides of lower lip

UPPER LIP

- Begin strokes on right side of the mouth, starting from the middle of the lip outward
- Repeat motion on left side of upper lip
- Perform 4 to 6 short, 2-second lateral strokes on both sides of upper lip



BODY HANDPIECE



DIAMONDGLOW™ BODY TREATMENT TIPS

15 mm

- 1 set of 3 diamond treatment tips and 1 smooth tip
- Ideal for larger surface areas:
 - Arms, décolletage, shoulders, calves and feet



SKIN TYPE	TIP GRIT
Resilient Skin	60
Thick Skin	80
Normal Skin	100
For Detoxifying Passes	00

BODY TREATMENT PARAMETERS



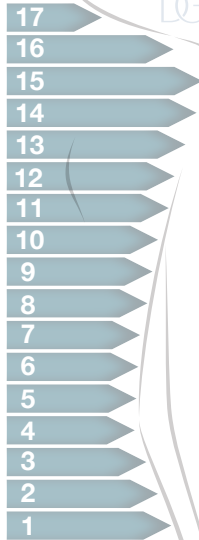
TREATMENT AREA	HANDPIECE	VACUUM SETTING	FLOW
Back	15 mm	2.0-3.0	20%
Chest/Décolletage	15 mm	2.0-3.0	20%
Abdomen	15 mm	2.0-3.0	20%
Arms	15 mm	3.0-4.0	25%-30%
Legs and Buttocks	15 mm	2.0-3.0	25%-50%
Feet	15 mm	5.0-6.0	20%-50%

DIAMONDGLOW™ TREATMENT PROTOCOL

Right Side of Back

- Begin in the middle of the back (spine) at the tailbone (sacrum) and work medial to lateral in direction until reaching the nape of the neck (occipital bones)*
- While holding the skin taut with your free hand, perform long, 6-second horizontal strokes
- Repeat on the opposite side of the back
- Second pass of the right side of the back is to be performed after completion of the left side of the back

*Each new stroke should align directly above the previous stroke. Number of strokes will vary patient to patient.

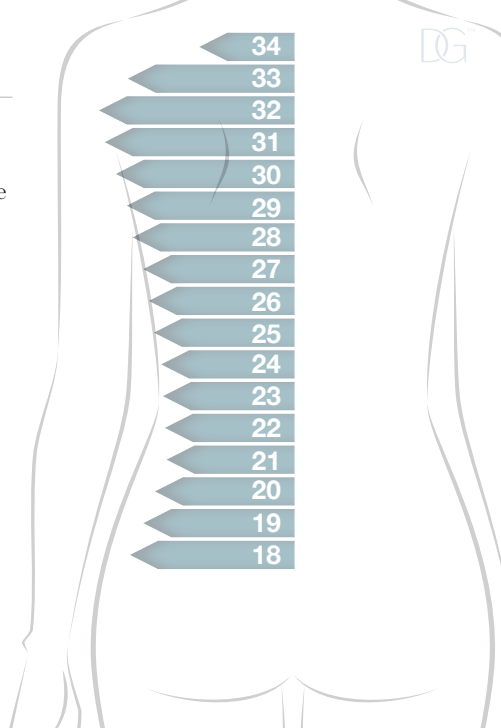


DIAMONDGLOW™ TREATMENT PROTOCOL

Left Side of Back

- Begin in the middle of the back (spine) at the tailbone (sacrum) and work medial to lateral in direction until reaching the nape of the neck (occipital bones)*
- While holding the skin taut with your free hand, perform long, 6-second horizontal strokes
- Repeat on the opposite side of the back
- Second pass of the left side of the back is to be performed after completion of the right side of the back

*Each new stroke should align directly above the previous stroke. Number of strokes will vary patient to patient.

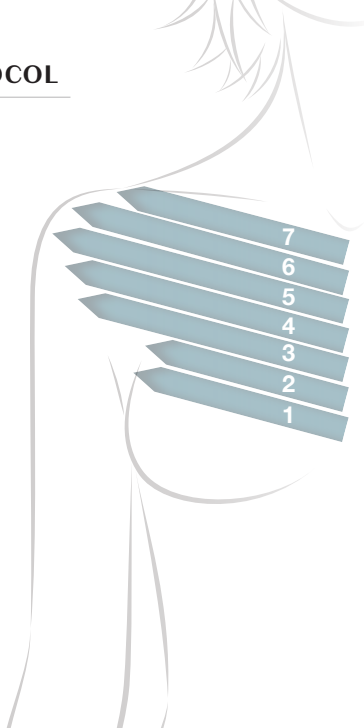


DIAMONDGLOW™ TREATMENT PROTOCOL

Right Side of Décolletage

- Begin in the middle of the décolletage, slightly above the breastbone and work medial to lateral in direction until reaching the base of the collarbone (supraclavicular)
- While holding the skin taut with your free hand, perform long, 6-second horizontal strokes
- Repeat on the opposite side of the décolletage
- Second pass of the right side of the décolletage is to be performed after completion of the left side of the décolletage

†Starting location on the décolletage will vary male to female.



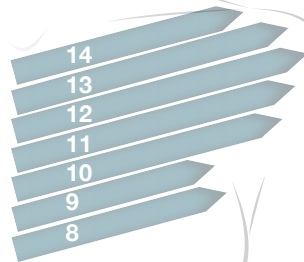
DIAMONDGLOW™ TREATMENT PROTOCOL

Left Side of Décolletage

- Begin in the middle of the décolletage, slightly above the breastbone and work medial to lateral in direction until reaching the base of the collarbone (supraclavicular)
- While holding the skin taut with your free hand, perform long, 6-second horizontal strokes
- Repeat on the opposite side of the décolletage
- Second pass of the left side of the décolletage is to be performed after completion of the right side of the décolletage

*Each new stroke should align directly above the previous stroke. Number of strokes will vary patient to patient.

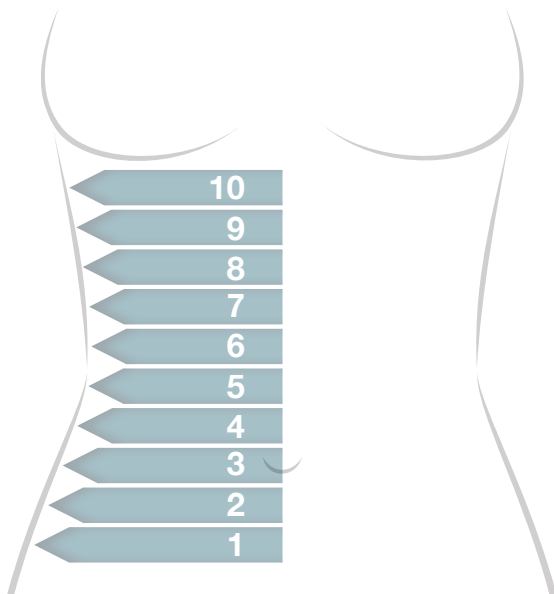
†Starting location on the décolletage will vary male to female.



DIAMONDGLOW™ TREATMENT PROTOCOL

Right Side of Abdomen

- Begin in the middle of the abdomen, slightly above the hip bone and work medial to lateral in direction until reaching the xiphoid process of the sternum
- While holding the skin taut with your free hand, perform long, 4-second horizontal strokes
- Repeat on the opposite side of the abdomen
- Second pass of the right side of the abdomen is to be performed after completion of the left side of the abdomen

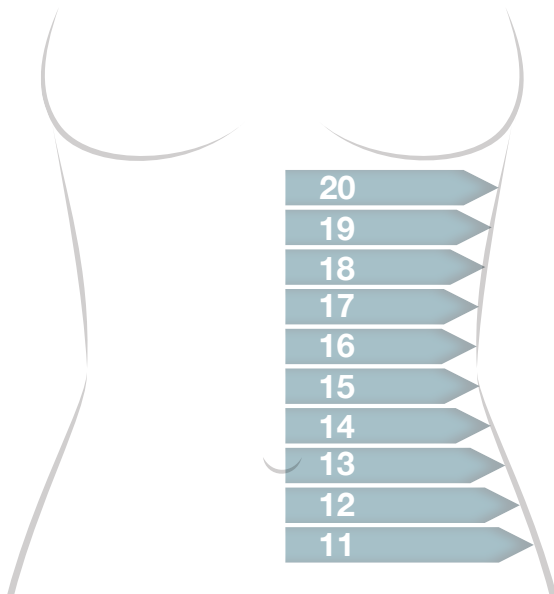


DIAMONDGLOW™ TREATMENT PROTOCOL

Left Side of Abdomen

- Begin in the middle of the abdomen, slightly above the hip bone and work medial to lateral in direction until reaching the xiphoid process of the sternum
- While holding the skin taut with your free hand, perform long, 4-second horizontal strokes
- Repeat on the opposite side of the abdomen
- Second pass of the left side of the abdomen is to be performed after completion of the right side of the abdomen

*Each new stroke should align directly above the previous stroke. Number of strokes will vary patient to patient.



SKINMEDICA® PRO-INFUSION SERUMS



Targeted SkinMedica® Pro-Infusion Serums
For a Wide Variety of Skin Quality Concerns

SELECTING THE RIGHT SKINMEDICA® PRO-INFUSION SERUMS



BENEFITS:

Intense hydration with skin rejuvenation

PATIENTS WITH:

Dry, dehydrated skin, fine lines/wrinkles



BENEFITS:

Extraordinary antioxidant protection

PATIENTS WITH:

Sun damage, dull, lackluster skin



BENEFITS:

To reduce the appearance of skin discoloration and even skin tone

PATIENTS WITH:

Hyperpigmentation, uneven skin tone, dull skin



BENEFITS:

Smooth skin texture and skin clarity

PATIENTS WITH:

Acne-prone skin, oily skin

ULTRA HYDRATING PRO-INFUSION SERUM

Appropriate for

- Dehydrated skin
- Lack of volume
- Fine lines and wrinkles

Benefits

- Improves overall skin hydration
- Reduces appearance of fine lines and wrinkles
- Helps replenish skin's moisture reservoir



Key Ingredients

- SODIUM HYALURONATE
 - Provides enhanced hydration to skin
- ACQUACELL™ TECHNOLOGY
 - Reduces the appearance of fine lines
 - Supports biohydration
 - Contains watermelon and apple extract
- ALLANTOIN
 - Soothes skin
 - Aids in exfoliating skin
 - Moisturizes skin

VITAMIN C PRO-INFUSION SERUM

Appropriate for

- Dull skin
- Patients looking to prevent photodamage

Benefits

- Antioxidant protection
- Enhances skin radiance and tone



Key Ingredients

- SODIUM ASCORBYL PHOSPHATE
 - Stable derivative of vitamin C
 - Antioxidant
 - Helps support extracellular matrix
 - Helps prevent photodamage
- TOCOPHERYL ACETATE (VITAMIN E)
 - Antioxidant
 - Helps prevent photodamage
 - Moisturizes skin
- VITIS VINIFERA (GRAPE) SEED EXTRACT
 - Powerful antioxidant
 - Supports epidermal rejuvenation

SKIN BRIGHTENING PRO-INFUSION SERUM WITH LUMIXYL® PEPTIDE

Appropriate for

- Skin discoloration
 - Freckles, solar lentigines, melasma
- Dull skin
- Uneven skin tone

Benefits

- Helps reduce appearance of skin discoloration
- Brightens skin



Key Ingredients

- DECAPEPTIDE-12 (LUMIXYL® PEPTIDE)
 - Developed by dermatology researchers at Stanford University
 - Synthetic peptide that helps brighten skin and even skin tone
- LICORICE ROOT EXTRACT
 - Antioxidant
 - Skin brightener
- ETHYL ASCORBIC ACID
 - Stable derivative of vitamin C
 - Antioxidant

PORE CLARIFYING PRO-INFUSION SERUM

Appropriate for

- Oily skin with imperfections
- Rough skin texture

Benefits

- Clarifies skin appearance
- Smooths skin texture
- Minimizes the appearance of pores



Key Ingredients

- SALICYLIC ACID
 - Supports skin exfoliation
- BAKUCHIOL
 - Antioxidant
 - Bionutrient that reduces the appearance of redness
- *ORIGANUM VULGARE* LEAF OIL (OREGANO OIL)
 - Powerful antioxidant

Do not treat eye area or over the lips when using Pore Clarifying Pro-Infusion Serum.

CLEANING PROTOCOL



After finishing your DiamondGlow™ procedure, please complete the following:

1. Empty waste jar and reattach.
2. Remove and discard solution bottle.
If there is leftover solution, cap it, date it, and use within 2 weeks. Please note: Vitamin C Serum must be used within 2 days.
3. Remove clear plastic disposable cap from handpiece and discard.
4. Remove diamond treatment tip from handpiece and place in the white Opti-Cide^{3*} cap.
 - There should be 2 diamond tips in the Opti-Cide^{3*} cap; exfoliating tip and smooth tip for around the eyes/lips.
5. Attach blue cleaning cap on handpiece.
6. Pour a small amount of Opti-Cide^{3*} into the cap containing diamond tips.
7. Insert Opti-Cide^{3*} in either #1 or #2 blue tube. Change mode switch to correlate with mode switch number.
8. Turn machine on, and turn both the silver vacuum and silver flow knobs all the way to the right.
9. Let run for approximately 3 minutes.
If you turn handpiece upside down on hook on back of device, an air bubble will appear in blue cleaning cap after a few minutes, letting you know the Opti-Cide^{3*} has run its course.

10. While machine is on, remove and discard empty Opti-Cide^{3®} bottle, and take off blue cleaning cap (you will hear a hissing noise, which is air pressure being released).
11. Let the device run for 10 to 20 seconds with the blue cleaning cap off (airflow is good for the device).
12. Remove, empty, and reattach waste jar.



Indication and Use

The DiamondGlow™ device is indicated for general dermabrasion of the skin and also delivers topical cosmetic serums onto the skin.

Important Safety Information

DiamondGlow™ is contraindicated in patients who have compromised skin quality including but not limited to, sunburned, chapped, irritated or broken skin, open wounds, active, weeping acne, cold sores, or herpetic ulcers. Ask your patient if they are pregnant or lactating or if they have any medical conditions, including allergies, and usage of topical medication on the area to be treated.

Typical side effects include a scratchy, stinging sensation during the treatment and temporary tightness, redness or slight swelling after the treatment. Rare serious side effects may also occur and include severe skin irritation and allergic reactions. Cease use of the device immediately if any of these serious side effects are observed.

Patients should be advised to use a sunscreen with a sun protection factor of 30 or higher following treatment.

Consult the DiamondGlow™ User Manual for a complete list of Contraindications, Warnings, Precautions, and potential side effects.

Pro-Infusion Serums Disclaimer

The Pro-Infusion Serums are intended to meet the FDA's definition of a cosmetic product, an article applied to the human body to cleanse, beautify, promote attractiveness, and alter appearances. These products are not intended to be drugs that diagnose, treat, cure, or prevent any disease or condition.

DIAMOND
GLOW™ / SKINMEDICA®



© 2020 Allergan. All rights reserved. All trademarks are the property of their respective owners.
Allergan.com SkinMedica.com AGE124838_v2 01/20 192651